

Apache



GLACIER

*Inspired By Nature,
Made Possible By...*



DOMAPBA840





DOMAPFR840



WOOD-LOOK PORCELAIN

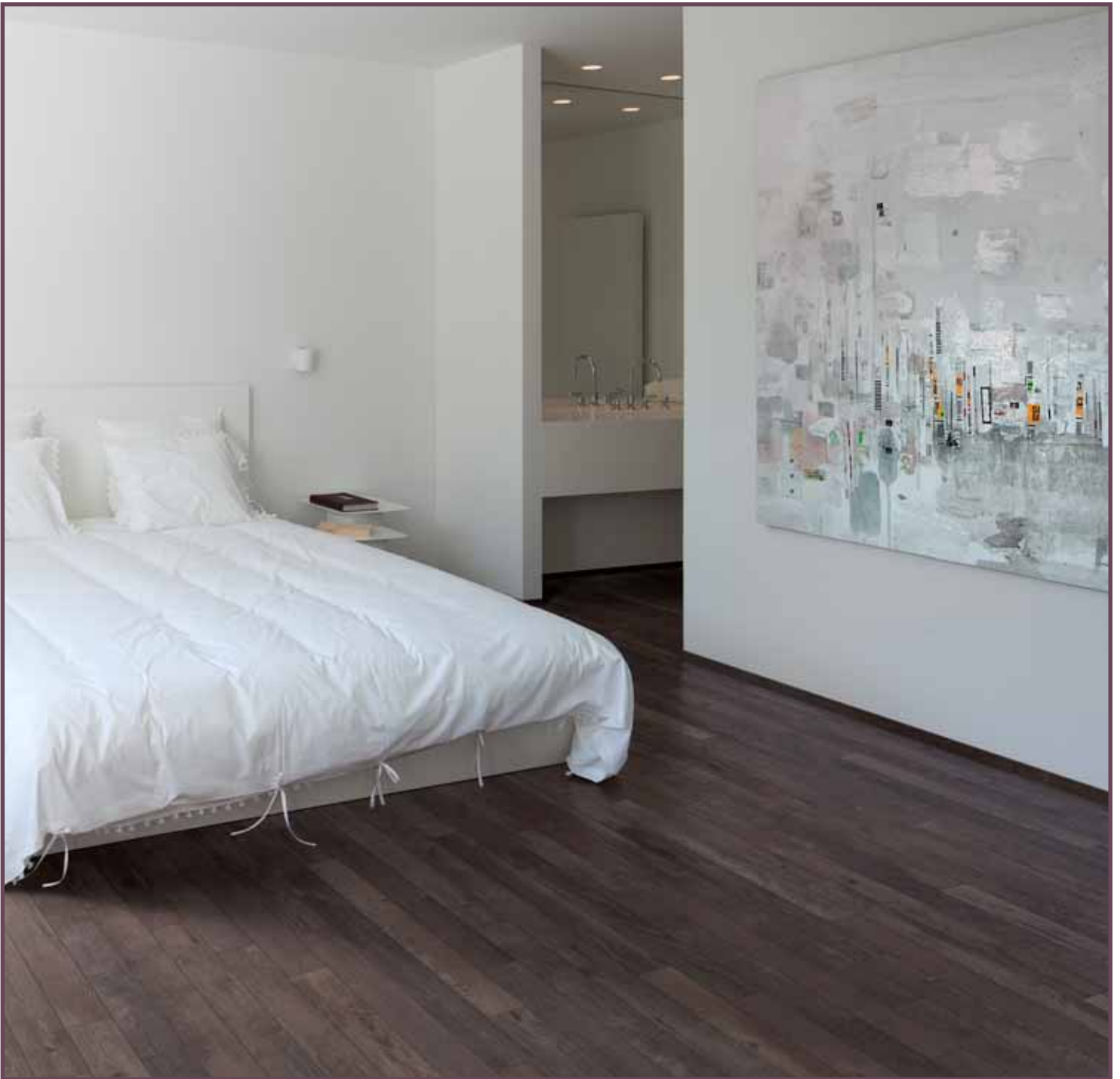
Glacier



DOMAPGL840



| 8 x 40 |



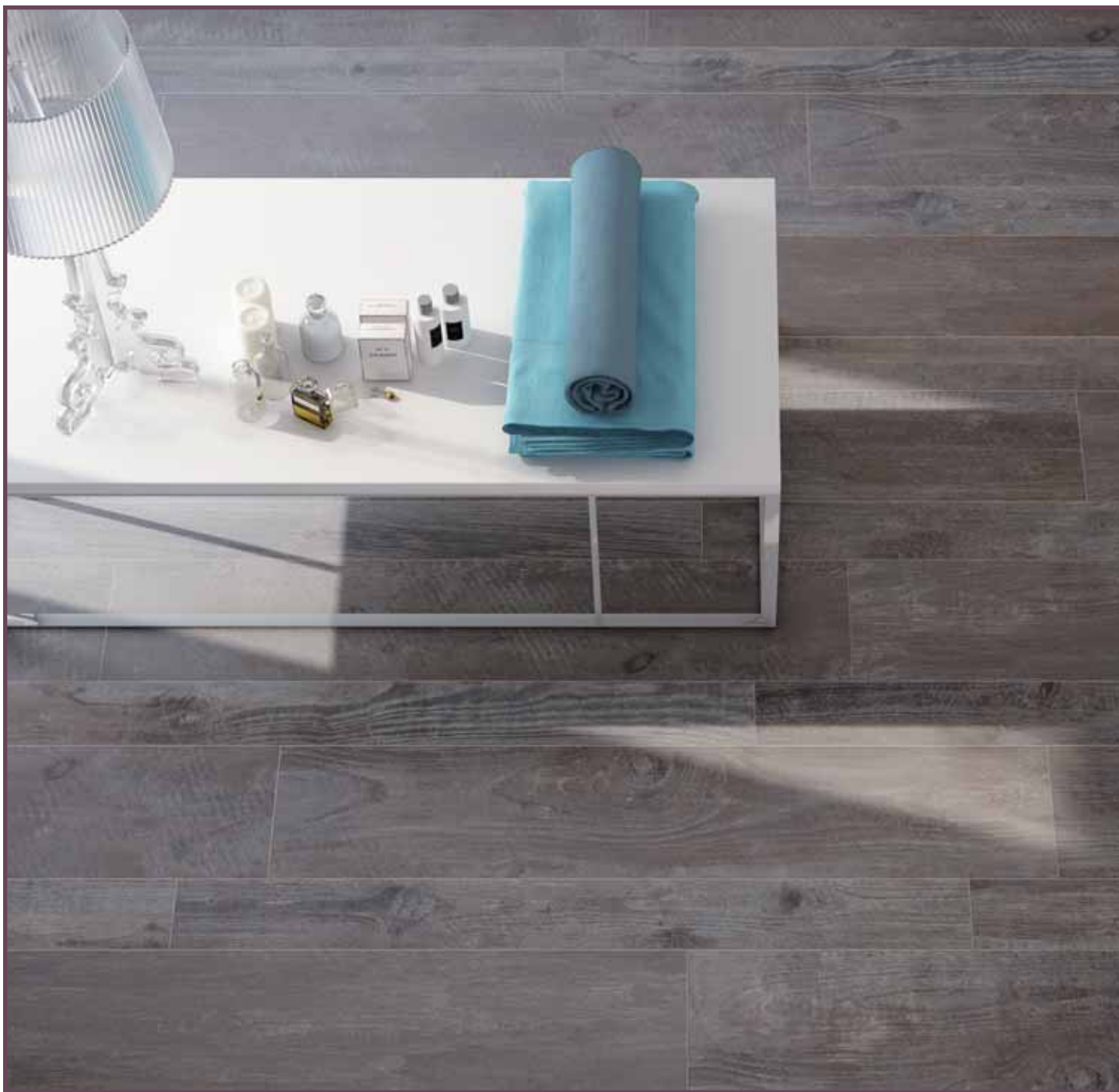
DOMAPLO840



| 8 x 40 |

WOOD-LOOK PORCELAIN

Summit



DOMAPSU840



| 8 x 40 |



DOMAPTR840



Suggested Applications



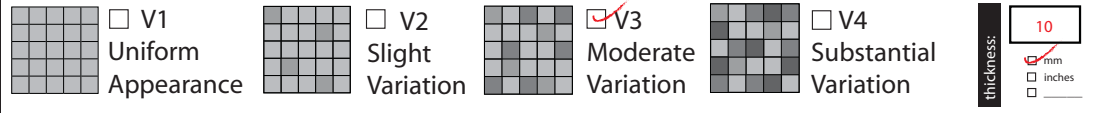
Installation Suggestions



Porcelain Type



Shade Variation



Slip Resistance

COF (coefficient of friction)				DIN 51130	DIN 51097	Class	Typical applications	Critical angle
accessible routes	standard*	WET result	DRY result	<input type="checkbox"/> R9*	3-10°	<input checked="" type="checkbox"/> A	Barefoot, but mainly dry aisles and walkways, dry changing areas	≥12°
	.6	0.65	0.70	<input checked="" type="checkbox"/> R10	10-19°	<input checked="" type="checkbox"/> B	Shower rooms, pool surrounds, wet changing areas, disinfectant spray areas (plus all Class A areas)	≥18°
ramps	.8		.8	<input type="checkbox"/> R11	19-27°	<input type="checkbox"/> C	Areas constantly under water, e.g. steps into pools, foot baths, included pool surrounds, jacuzzis (plus all Class A&B areas)	≥24°
				<input type="checkbox"/> R12	27-35°			
				<input type="checkbox"/> R13	>35°			

Values: 0-0.50 Questionable, 0.50-0.60 Conditionally Slip Resistant, >0.60 Slip Resistant. DCOF: 0.65. *Industry Standard/ADA Requirements.

ASTM C-1028
DIN 51097/51130

Scratch Resistance

Mineral	Mineral
1. Talc (Talc)	6. Microline (Glass, Glazed Tile)
2. Gypsum (Fingernail)	7. Quartz (Unglazed Porcelain)
3. Calcite (Penny)	8. Topaz (Granite)
4. Fluorite (Some Marbles)	9. Corundum (Ruby)
5. Apatite (Knife Blade)	10. Diamond (Diamond)

Wear Resistance

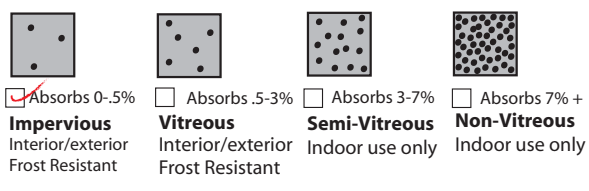
- Class 1: Walls only
- Class 2: Resid. floors w/minimal abrasive traffic.
- Class 3: Resid. interiors normal use and foot traffic.
- Class 4: Light-medium commercial applications.
- Class 5: Commercial applications.

MOH'S SCALE
UNI EN ISO 10545.6 <175

Stain Resistance

- Removed after 5 minutes (hot water running)
- Removed by manual cleaning (weak detergent)
- Removed by mechanical cleaning (strong detergent)
- Removed by immersion (24 hrs in suitable solvent)
- Stain not removed

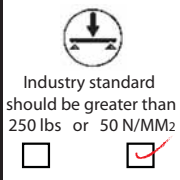
Water Absorption



ASTM C1378-04
UNI EN ISO 10545.14 5

ASTM C-373
UNI EN ISO 10545.3 ≤0.5

Breaking Strength



ASTM C648
UNI EN ISO 10545.4 >35

Facial Dimension

	Standard	Tolerance	Result
flatness	± 5mm	± .5%	COMPLIES
thickness	± 6mm	± .5%	COMPLIES
straightness	± 4.5mm	± .5%	COMPLIES
squareness	± 5.4mm	± .6%	COMPLIES
sides L/W	± 1.1mm / ± 4.5mm	± .5%	COMPLIES

ASTM c499-09
UNI EN ISO 10545.02

Chemical Resistance

Allowances for:

	result
acid	<input type="checkbox"/>
bases	<input type="checkbox"/>
chemicals	<input checked="" type="checkbox"/>

ASTM C650
UNI EN ISO 10545.13

Leed Information

Sustainable Sites	Allowances for:	
	1 Point	2 Points
SS CREDIT 1 Heat Island Effect-non roof Material with a solar reflectant index of at least 29.	<input type="checkbox"/>	<input type="checkbox"/>
Energy & Atmosphere EA CREDIT 4 Green Power: Products that optimize energy performance for floors and walls using thermal conductivity. BTU-FT	<input type="checkbox"/>	<input type="checkbox"/>
Indoor Environmental Quality Low-Emitting Materials-Flooring Systems IEQ CREDIT 3.1-7 Green Cleaning: Reducing occupants exposure to hazardous cleaning chemicals.	<input type="checkbox"/>	<input type="checkbox"/>
IEQ CREDIT 4.1 Low Emitting Adhesives: Products less than 65 G/L VOC	<input type="checkbox"/>	<input type="checkbox"/>
IEQ CREDIT 4.3 Low Emitting Materials: Flooring systems.	<input type="checkbox"/>	<input type="checkbox"/>
Materials & Resources M&R CREDIT 2 Construction Waste Management: Recycling salvaged construction waste in to new reusable materials.	50% <input type="checkbox"/>	70% <input type="checkbox"/>
M&R CREDIT 4.1-4.2 Recycled Content: The sum of post consumer plus 1/2 of the pre consumer reps at least 10-20% of total value of materials.	10% <input type="checkbox"/>	20% <input type="checkbox"/>
M&R CREDIT 5 Regional Materials: Materials manufactured within 500 miles of the project site.	10% <input type="checkbox"/>	20% <input type="checkbox"/>
Innovation in Design ID CREDIT 1 Innovation in Design Measurable exemplary environmental performance.	1-5 Points <input type="checkbox"/>	

Type: **Porcelain Stoneware**
Product Line: **Apache**

1: WEAR RESISTANCE

Differs according to color surface. Class 4: Barrel, Glacier, Lodge, Summit, Trail | Class 5: Frost

2: LEED INFORMATION

All Cerindustries products comply with many of LEED's requirements and porcelain stoneware are made up of a percentage of recycled and recovered material (pre-consumer), that does exceed 40% of the total quantity of clays employed. Cerindustries products do not release VOC and are manufactured in production facilities environmental friendly certified.