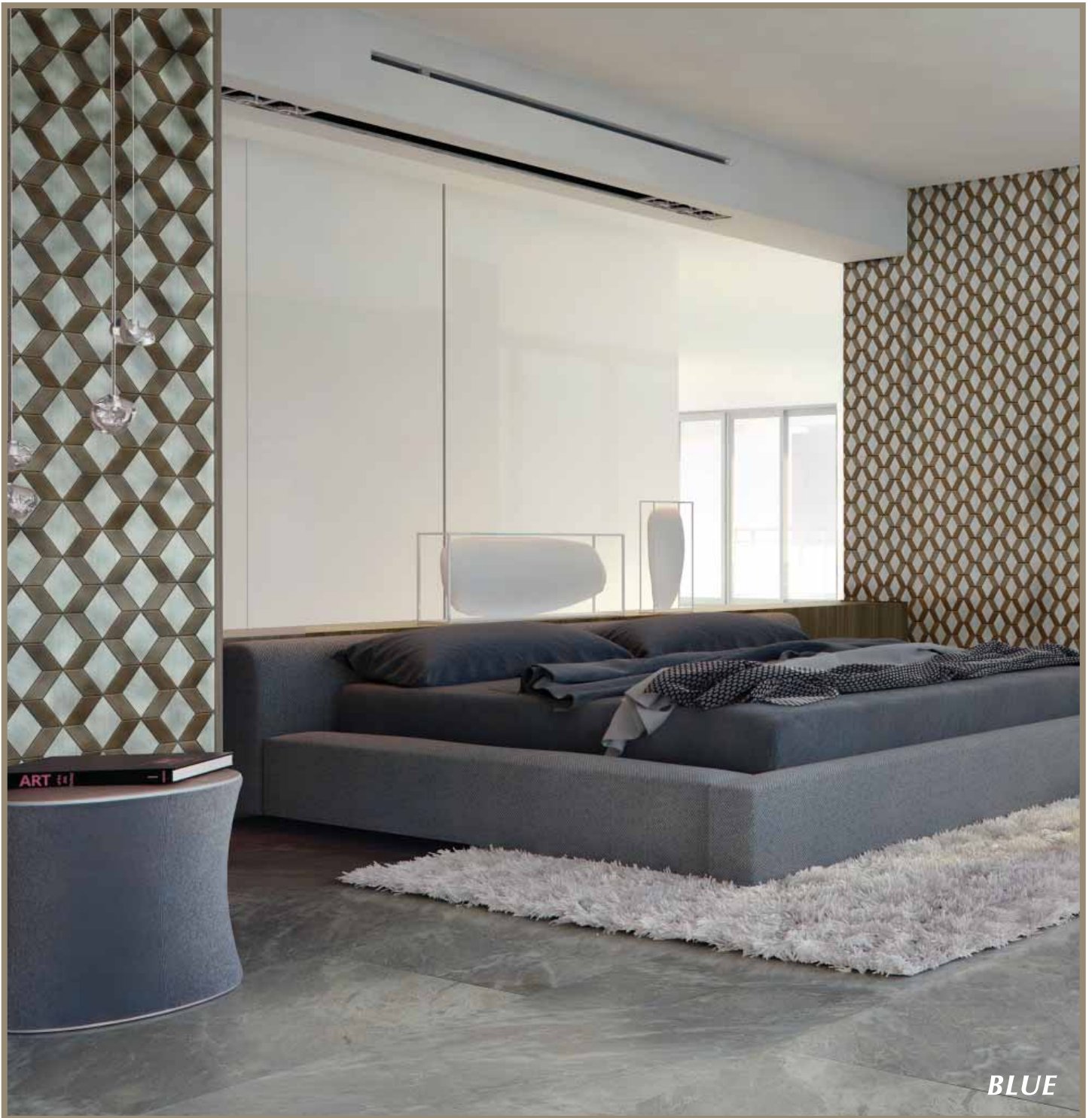


Neostone



BLUE

*Inspired By Nature,
Made Possible By...*

PORCELAIN STONEWARE



Arabescato

USANEAR412



| 4 x 12 |

USANEARBN424



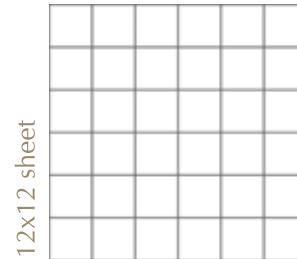
| 4 x 24 bullnose |

USANEAR1224



| 12 x 24 |

USANEARMOS22



12x12 sheet

| 2 x 2 mosaic |

USANEARMOSTIZ



10x12 sheet

| tiziano mosaic |

USANEAR1248



| 12 x 48 |

USANEAR2448



| 24 x 48 |

PORCELAIN STONEWARE



USANEBL412



| 4 x 12 |

USANEBLBN424



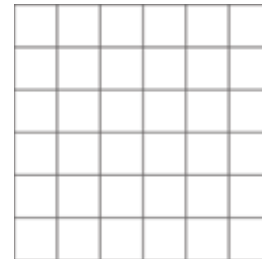
| 4 x 24 bullnose |

USANEBL1224



| 12 x 24 |

USANEBLMOS22



12x12 sheet

| 2 x 2 mosaic |

USANEBLMOSTIZ



10x12 sheet

| tiziano mosaic |

USANEBL1248



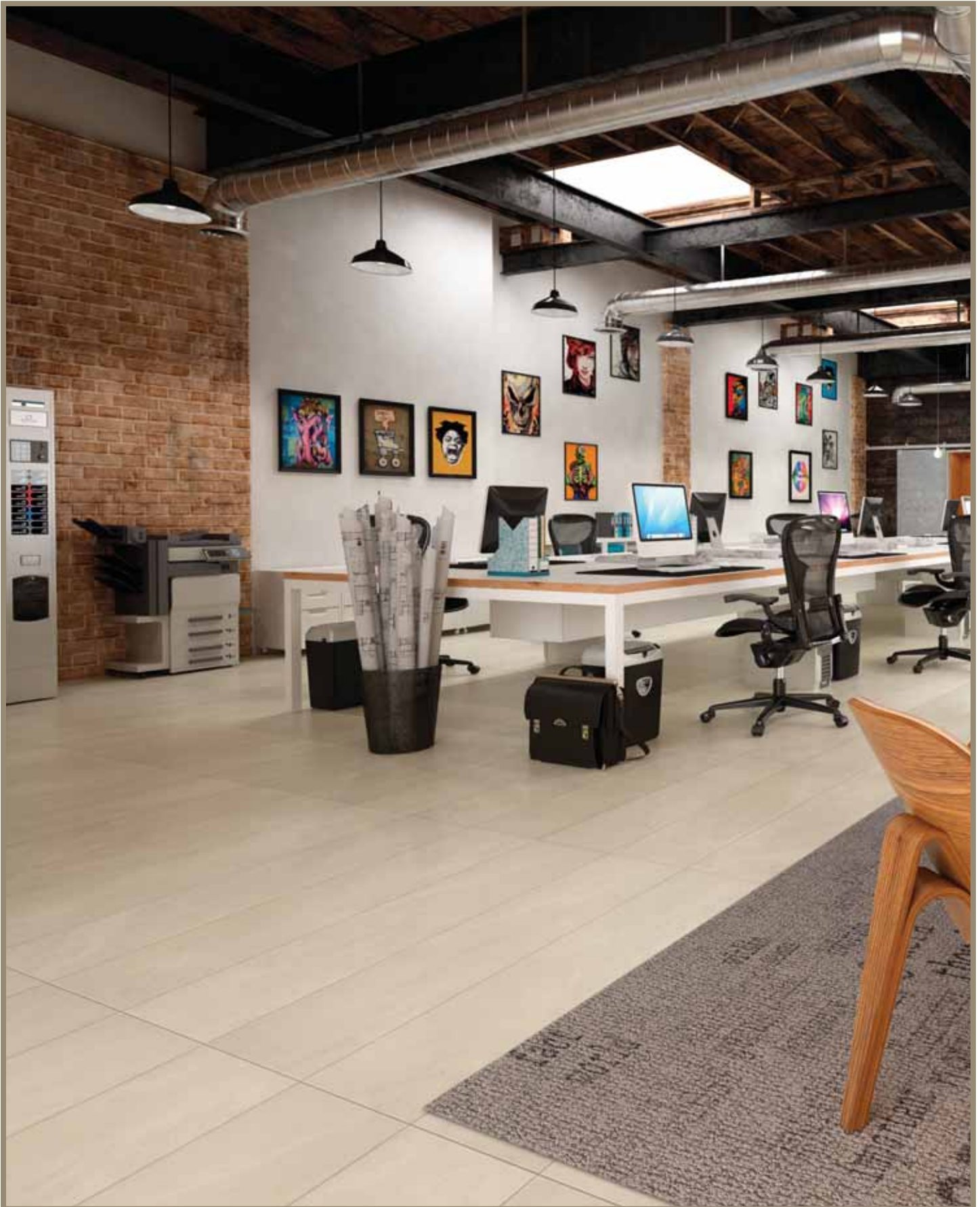
| 12 x 48 |

USANEBL2448



| 24 x 48 |

PORCELAIN STONEWARE



USANEGI412



| 4 x 12 |

USANEGIBN424



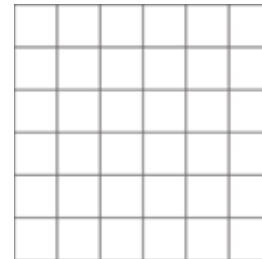
| 4 x 24 bullnose |

USANEGI1224



| 12 x 24 |

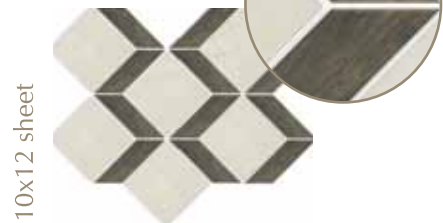
USANEGIMOS22



12x12 sheet

| 2 x 2 mosaic |

USANEGIMOSTIZ



10x12 sheet

| tiziano mosaic |

USANEGI1248



| 12 x 48 |

USANEGI2448



| 24 x 48 |

PORCELAIN STONEWARE



USANEPA412



| 4 x 12 |

USANEPABN424



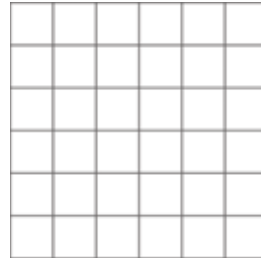
| 4 x 24 bullnose |

USANEPA1224



| 12 x 24 |

USANEPAMOS22



12x12 sheet

| 2 x 2 mosaic |

USANEPAMOSTIZ



10x12 sheet

| tiziano mosaic |

USANEPA1248



| 12 x 48 |

USANEPA2448



| 24 x 48 |

PORCELAIN STONEWARE



USANEVE412



| 4 x 12 |

USANEVEBN424



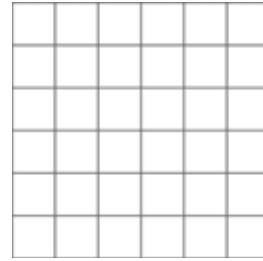
| 4 x 24 bullnose |

USANEVE1224



| 12 x 24 |

USANEVEMOS22



12x12 sheet

| 2 x 2 mosaic |

USANEVEMOSTIZ



10x12 sheet

| tiziano mosaic |

USANEVE1248



| 12 x 48 |

USANEVE2448



| 24 x 48 |

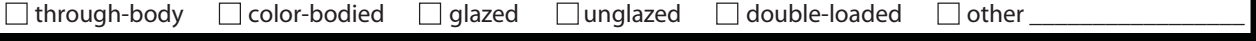
Suggested Applications



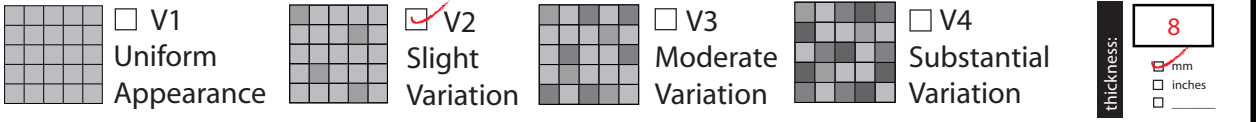
Installation Suggestions



Porcelain Type



Shade Variation



Slip Resistance

COF (coefficient of friction)	WET		DRY		DIN 51130	DIN 51097	Class	Typical applications	Critical angle
	standard*	result	standard*	result					
accessible routes	.6		.6		<input type="checkbox"/> R9*	3-10°	<input type="checkbox"/> A	Barefoot, but mainly dry aisles and walkways, dry changing areas	≥12°
ramps	.8		.8		<input type="checkbox"/> R10	10-19°	<input type="checkbox"/> B	Shower rooms, pool surrounds, wet changing areas, disinfectant spray areas (plus all Class A areas)	≥18°
					<input type="checkbox"/> R11	19-27°	<input type="checkbox"/> C	Areas constantly under water, e.g. steps into pools, foot baths, included pool surrounds, jacuzzis (plus all Class A&B areas)	≥24°
					<input type="checkbox"/> R12	27-35°			
					<input type="checkbox"/> R13	>35°			

Values: 0-0.50, 0.50-0.60, >0.60
 Tile Classification: Questionable, Conditionally Slip Resistant, Slip Resistant
 DCOF: .61
 *Industry Standard/ADA Requirements

ASTM C-1028
DIN 51097/51130

Scratch Resistance

Mineral	Mineral
1. Talc (Talc)	6. Microline (Glass, Glazed Tile)
2. Gypsum (Fingernail)	7. Quartz (Unglazed Porcelain)
3. Calcite (Penny)	8. Topaz (Granite)
4. Fluorite (Some Marbles)	9. Corundum (Ruby)
5. Apatite (Knife Blade)	10. Diamond (Diamond)

Industry standard ≤175mm²

MOH'S SCALE
UNI EN ISO
10545.6

Wear Resistance

- Class 1: Walls only
- Class 2: Resid. floors w/minimal abrasive traffic.
- Class 3: Resid. interiors normal use and foot traffic.
- Class 4: Light-medium commercial applications.
- Class 5: Commercial applications.

PEI RATING
UNI EN ISO
10545.7

Stain Resistance

- Removed after 5 minutes (hot water running)
- Removed by manual cleaning (weak detergent)
- Removed by mechanical cleaning (strong detergent)
- Removed by immersion (24 hrs in suitable solvent)
- Stain not removed

ASTM C1378-04
UNI EN ISO
10545.14

Water Absorption

ASTM C-373
UNI EN ISO
10545.3

Water Absorption	Impervious	Vitreous	Semi-Vitreous	Non-Vitreous
<input checked="" type="checkbox"/> Absorbs 0-.5%	<input type="checkbox"/> Absorbs .5-3%	<input type="checkbox"/> Absorbs 3-7%	<input type="checkbox"/> Absorbs 7% +	
Interior/exterior Frost Resistant	Interior/exterior Frost Resistant	Indoor use only	Indoor use only	

Breaking Strength

Industry standard should be greater than 250 lbs or 50 N/MM²

ASTM C648
UNI EN ISO
10545.4

Facial Dimension

ASTM c499-09
UNI EN ISO
10545.02

	Standard	Tolerance	Result
flatness	± 5mm	± .5%	
thickness	± 6mm	± .5%	
straightness	± 4.5mm	± .5%	
squareness	± 5.4mm	± .6%	
sides L/W	± 1.1mm / ± 4.5mm	± .5%	

Chemical Resistance

ASTM C650
UNI EN ISO
10545.13

Allowances for:

	result
acid	
bases	
chemicals	

Leed Information

REQUIREMENTS FOR COMMERCIAL INTERIORS/NEW CONSTRUCTION

Sustainable Sites	Materials & Resources	Innovation in Design
Site selection SS CREDIT 1 Heat Island Effect-non roof Material with a solar reflectant index of at least 29. Energy & Atmosphere EA CREDIT 4 Green Power: Products that optimize energy performance for floors and walls using thermal conductivity. BTU-FT Indoor Environmental Quality Low-Emitting Materials-Flooring Systems IEQ CREDIT 3.1-7 Green Cleaning: Reducing occupants exposure to hazardous cleaning chemicals. IEQ CREDIT 4.1 Low Emitting Adhesives: Products less than 65 G/L VOC IEQ CREDIT 4.3 Low Emitting Materials: Flooring systems.	Allowances for: M&R CREDIT 2 Construction Waste Management: Recycling salvaged construction waste in to new reusable materials. M&R CREDIT 4.1-4.2 Recycled Content: The sum of post consumer plus 1/2 of the pre consumer reps at least 10-20% of total value of materials. M&R CREDIT 5 Regional Materials: Materials manufactured within 500 miles of the project site.	Allowances for: 1 Point 50% <input checked="" type="checkbox"/> 10% <input checked="" type="checkbox"/> 10% <input checked="" type="checkbox"/> 1-5 Points ID CREDIT 1 Innovation in Design Measurable exemplary environmental performance.

Type: Porcelain Stoneware
Product Line: Neostone