

Platinum



*Inspired By Nature,
Made Possible By...*

PORCELAIN STONEWARE



Charcoal

ELE PLCH 1224



| 12 x 24 |

ELE PLCH 24



| 24 x 24 |

ELE PLCH BN224



bullnose | 2 x 24 |

ELE PLAT SPHERA



| 6 x 24 |

ELE PLCH MOS3D



| 5 x 10 |

ELE PLCH 2040



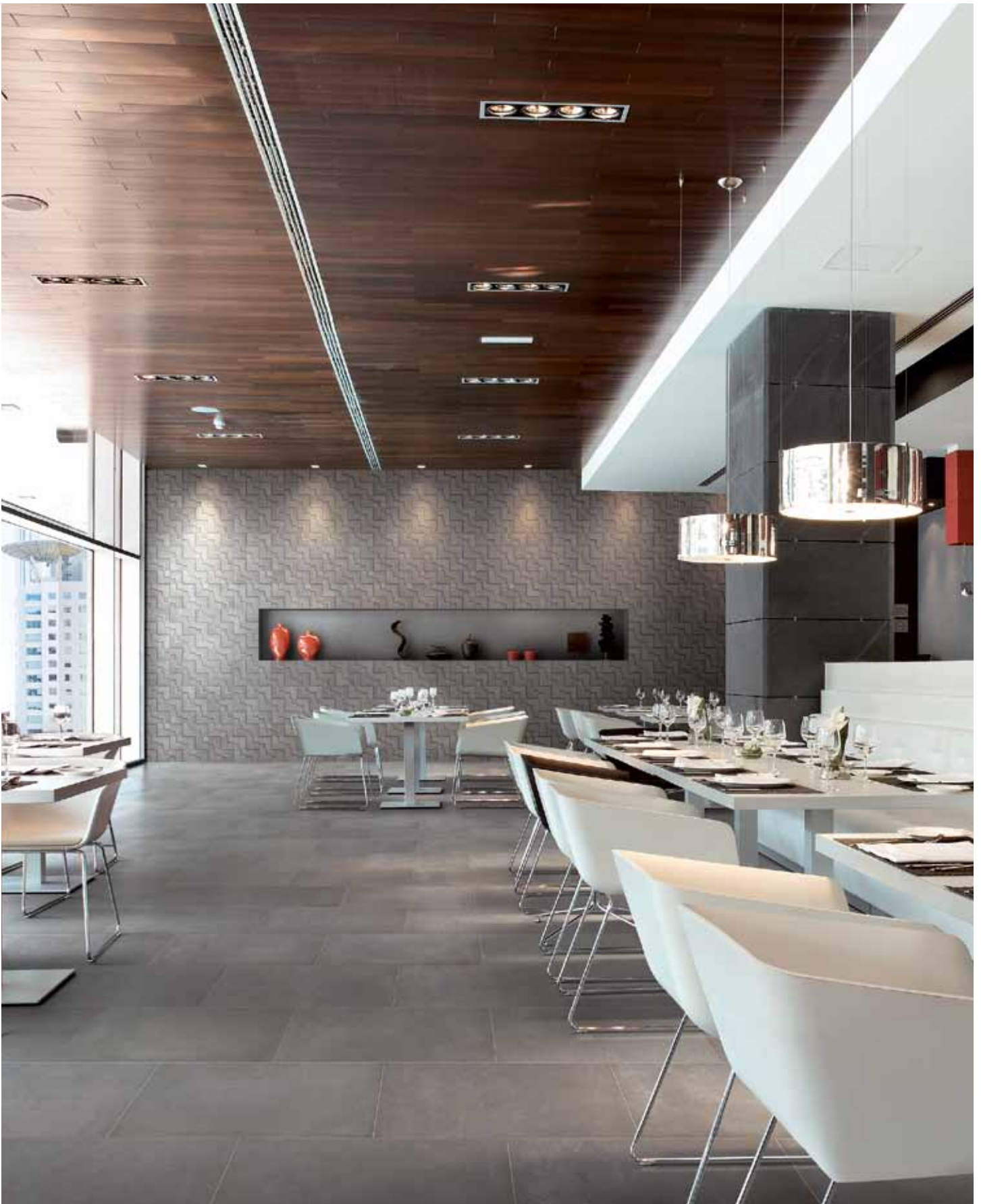
| 20 x 40 |

ELE PLCH 1040

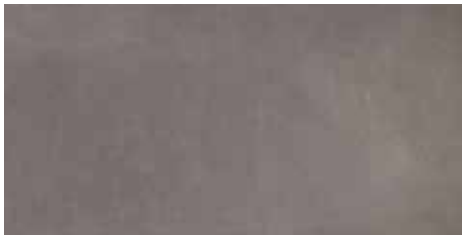


| 10 x 40 |

PORCELAIN STONEWARE



ELE PLFO 1224



| 12 x 24 |

ELE PLFO 24



| 24 x 24 |

ELE PLFO BN224



bullnose | 2 x 24 |

ELE PLAT SPHERA



| 6 x 24 |

ELE PLFO MOS3D



| 5 x 10 |

ELE PLFO 2040



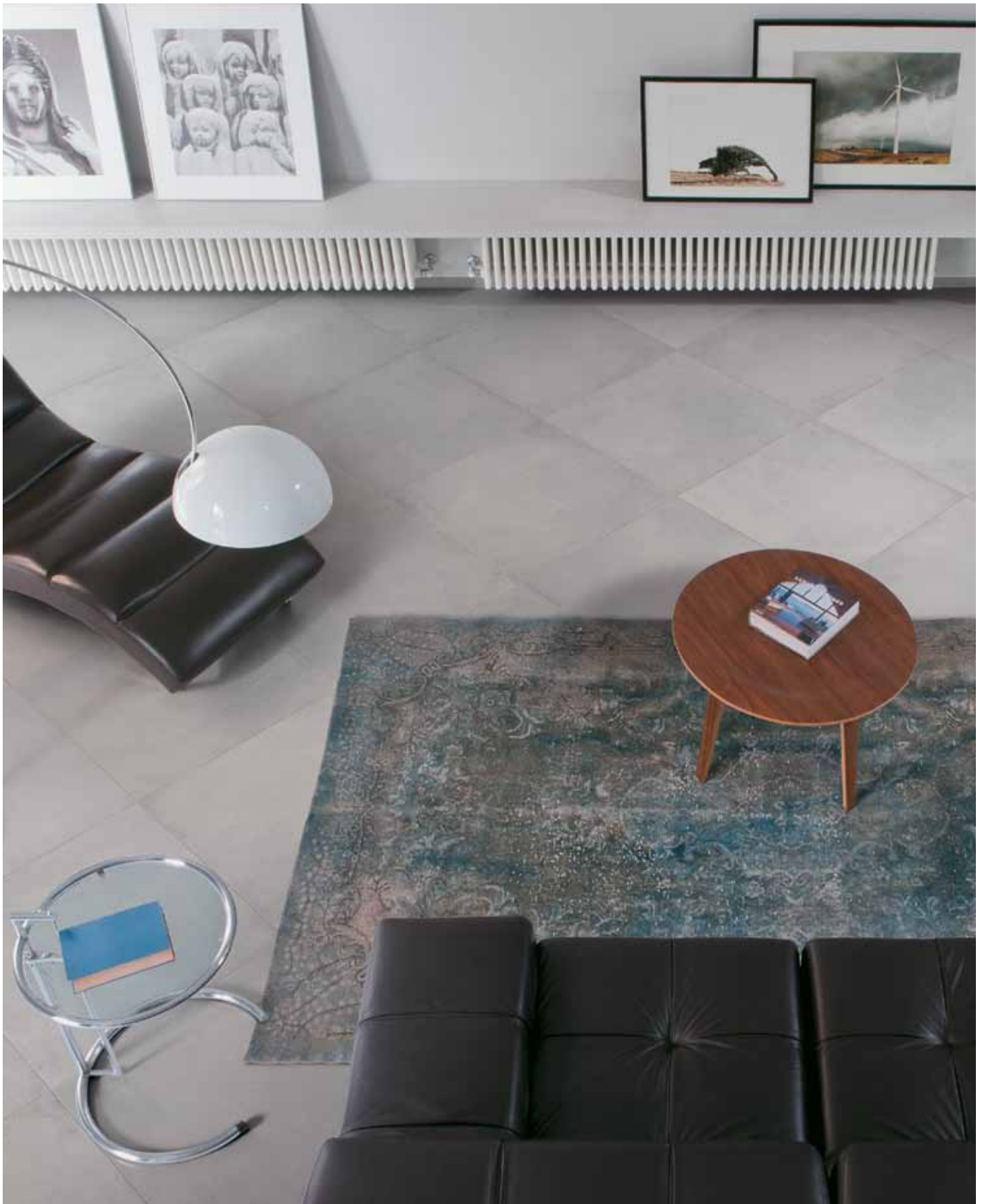
| 20 x 40 |

ELE PLFO 1040



| 10 x 40 |

PORCELAIN STONEWARE



ELE PLGR 1224



| 12 x 24 |

ELE PLGR 24



| 24 x 24 |

ELE PLGR BN224



bullnose

| 2 x 24 |

ELE PLAT SPHERA



| 6 x 24 |

ELE PLGR MOS3D



| 5 x 10 |

ELE PLGR 2040



| 20 x 40 |

ELE PLGR 1040



| 10 x 40 |

PORCELAIN STONEWARE



ELE PLTA 1224



| 12 x 24 |

ELE PLTA 24



| 24 x 24 |

ELE PLTA BN224



bullnose

| 2 x 24 |

ELE PLAT SPHERA



| 6 x 24 |

ELE PLTA MOS3D



| 5 x 10 |

ELE PLTA 2040



| 20 x 40 |

ELE PLTA 1040

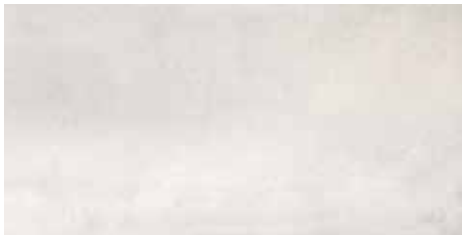


| 10 x 40 |

PORCELAIN STONEWARE



ELE PLWH 1224



| 12 x 24 |

ELE PLWH 24



| 24 x 24 |

ELE PLWH BN224



bullnose

| 2 x 24 |

ELE PLAT SPHERA



| 6 x 24 |

ELE PLWH MOS3D



| 5 x 10 |

ELE PLWH 2040



| 20 x 40 |

ELE PLWH 1040



| 10 x 40 |

The marketing name for this product is property of Cancos Tile Corp. This same product may be marketed under different names.

Suggested Applications

floor wall residential light commercial heavy commercial exterior pools
*except white

Installation Suggestions

joint size modular setting plank installation edge: straight rustic rectified finish: matte polished structured honed semi-polished other

Porcelain Type

through-body color-bodied glazed unglazed double-loaded other

Shade Variation

V1 Uniform Appearance V2 Slight Variation V3 Moderate Variation V4 Substantial Variation
 thickness: **11mm** # of faces: **12-22**

Slip Resistance

COF **WET** **DRY** **DCOF** **DIN 51130** **DIN 51097**
 accessible routes: **.6** **.74** **.6** **.83** **.62**
 ramps: **.8** **.8**
*Industry Standard/ADA Requirements
 Values: 0-0.50 Questionable, 0.50-0.60 Conditionally Slip Resistant, >0.60 Slip Resistant
 Class A: Barefoot, but mainly dry aisles and walkways, dry changing areas (≥12°)
 Class B: Shower rooms, pool surrounds, wet changing areas, disinfectant spray areas (plus all Class A areas) (≥18°)
 Class C: Areas constantly under water, e.g. steps into pools, foot baths, included pool surrounds, jacuzzis (plus all Class A&B areas) (≥24°)

Scratch Resistance

Mineral
 1. Talc (Talc) 6. Microline (Glass, Glazed Tile)
 2. Gypsum (Fingernail) 7. Quartz (Unglazed Porcelain)
 3. Calcite (Penny) 8. Topaz (Granite)
 4. Flourite (Some Marbles) 9. Corundum (Ruby)
 5. Apatite (Knife Blade) 10. Diamond (Diamond)
 Industry standard ≤175mm²
Wear Resistance
 PEI RATING **UNI EN ISO 10545.7**
 Class 1: Walls only
 Class 2: Resid. floors w/minimal abrasive traffic.
 Class 3: Resid. interiors normal use and foot traffic.
 Class 4: Light-medium commercial applications.
 Class 5: Commercial applications.

Stain Resistance

5: Removed after 5 minutes (hot water running)
 4: Removed by manual cleaning (weak detergent)
 3: Removed by mechanical cleaning (strong detergent)
 2: Removed by immersion (24 hrs in suitable solvent)
 1: Stain not removed
Water Absorption
 ASTM C-373 **UNI EN ISO 10545.3** **>0.5**
 Absorbs 0-.5% **Impervious** Interior/exterior Frost Resistant
 Absorbs .5-3% **Vitreous** Interior/exterior Frost Resistant
 Absorbs 3-7% **Semi-Vitreous** Indoor use only
 Absorbs 7%+ **Non-Vitreous** Indoor use only

Breaking Strength

ASTM C648 **UNI EN ISO 10545.4** **>35**
 Industry standard should be greater than 250 lbs or 50 N/MM²

Facial Dimension

ASTM c499-09 **UNI EN ISO 10545.02**
 flatness: **±5mm** **±.5%**
 thickness: **±6mm** **±.5%**
 straightness: **±4.5mm** **±.5%**
 squareness: **±5.4mm** **±.6%**
 sides L/W: **±1.1mm** **±.5%**

Chemical Resistance

ASTM C650 **UNI EN ISO 10545.13**
 Allowances for: acid **UA**, bases **ULA**, chemicals **UHC**

Leed Information

Sustainable Sites **1 Point**
 Site selection
 SS CREDIT 1 **Heat Island Effect-non roof**
 Material with a solar reflectant index of at least 29.
Energy & Atmosphere **1 Point**
 EA CREDIT 4 **Green Power:** Products that optimize energy performance for floors and walls using thermal conductivity. BTU-FT
Indoor Environmental Quality **1 Point**
 Low-Emitting Materials-Flooring Systems
 IEQ CREDIT 3.1-7 **Green Cleaning:** Reducing occupants exposure to hazardous cleaning chemicals.
 IEQ CREDIT 4.1 **Low Emitting Adhesives:** Products less than 65 G/L VOC
 IEQ CREDIT 4.3 **Low Emitting Materials:** Flooring systems.

Materials & Resources

M&R CREDIT 2 Construction Waste Management: Recycling salvaged construction waste in to new reusable materials. 50% 70%
M&R CREDIT 4.1-4.2 Recycled Content: The sum of post consumer plus 1/2 of the pre consumer reps at least 10-20% of total value of materials. 10% 20%
M&R CREDIT 5 Regional Materials: Materials manufactured within 500 miles of the project site. 10% 20%

Innovation in Design

ID CREDIT 1 Innovation in Design **1-5 Points**
 Measurable exemplary environmental performance.

Type: **Porcelain Stoneware**
 Product Line: **Platinum**